

# PROPERTY EDGES//COMMON THRESHOLDS

*tracing the maintenance and evolution of edge cultivation at Locust Grove*

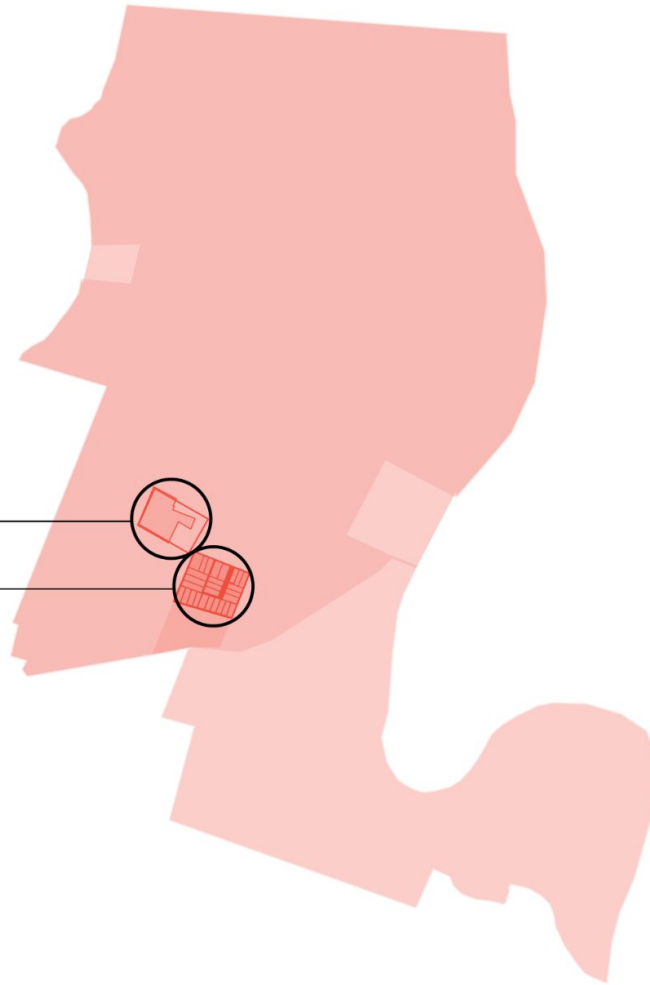
# TABLE OF CONTENTS

SITES + METHODOLOGY	3
EDGE DIMENSIONS + TYPOLOGIES	6
SITE 1: SINCLAIR HOUSE/ 810 LOCUST AVE.	9
SITE 2: HAZEL ST. "COMMONS"	15
THE BOTANICAL TRADE + THE PLANTED EDGE	25
SIGNIFICANT PLANTS OF THE LOCUST GROVE EDGE	34

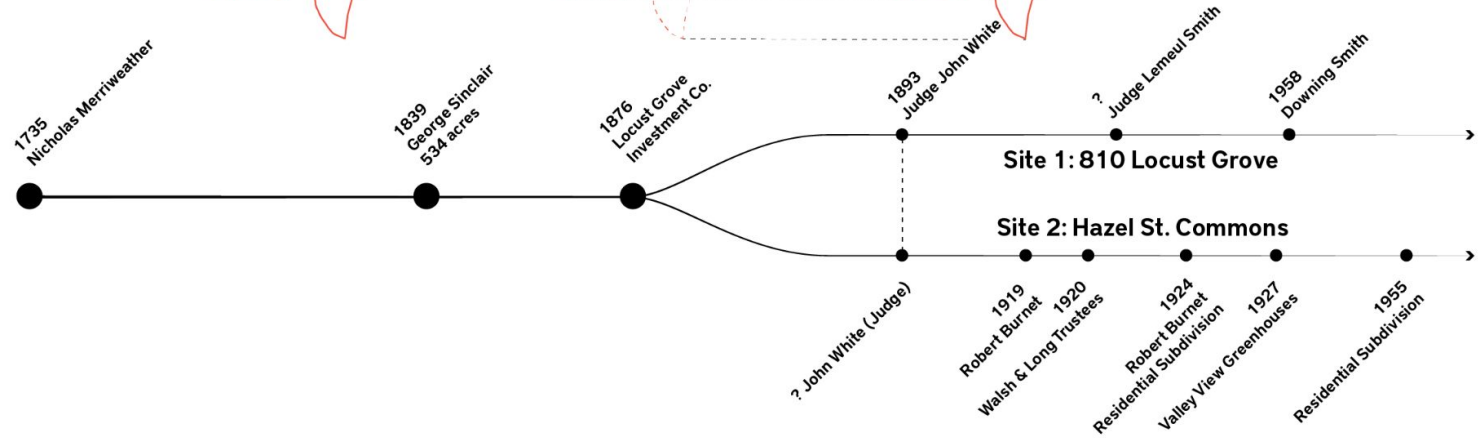
# From Plantation to Suburbs 1735-Today

Site 1:  
The Sinclair Residence

Site 2:  
Hazel St. Commons



# Land Subdivision





An aerial photograph of a residential neighborhood. A rectangular area in the center is highlighted with a dark, semi-transparent overlay. The surrounding area shows a grid of streets, houses with various roof colors, and green spaces.

810 LOCUST ST.  
SINCLAIR HOUSE

An aerial photograph of a residential neighborhood, similar to the one above. A rectangular area is highlighted with a dark, semi-transparent overlay. The surrounding area shows a grid of streets, houses, and green spaces.

PLANNED BUT NEVER CON-  
STRUCTED HILLCREST AVE.  
(BACKYARD COMMONS)



# Dimensions of Edges

**PROPERTY** (LEGAL)

**MAINTENANCE** (TEMPORAL)

**PHYSICAL** (SPATIAL)



# EDGE TYPES

Hazel St. Unowned Lot

*fencing + walls I*



*fencing + walls II*



*vegetation*





# EDGE TYPES

810 Locust Ave.

*signage*



*vegetation*



*topography*



# **Site 1**

**810 Locust Ave**

## BOXWOOD WALL @ HAZEL ST.

SOUTHERN EDGE OF 810 LOCUST ST. PROPERTY



Boxwood Hedge (*Buxus sempervirens*)  
native to parts of Europe, Asia, and Africa



## BARBERRY WALL @ HAZEL ST.

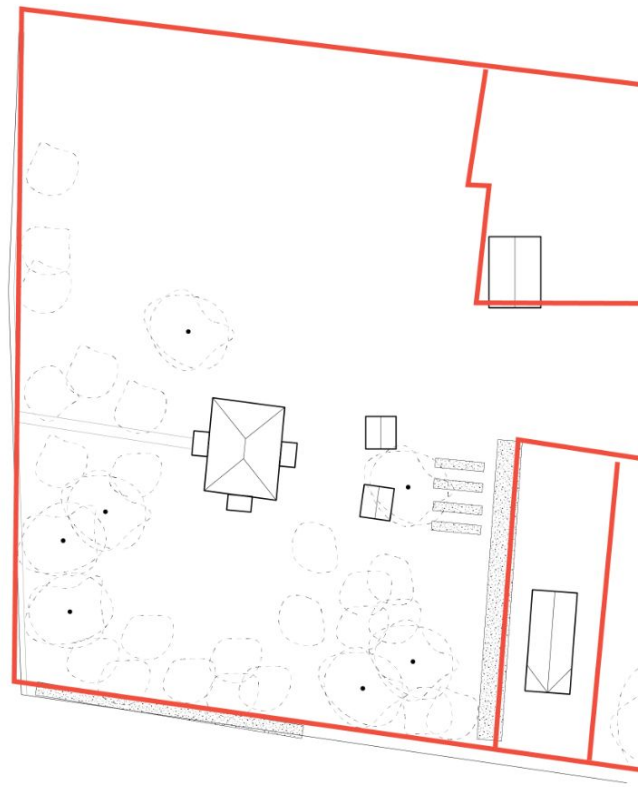
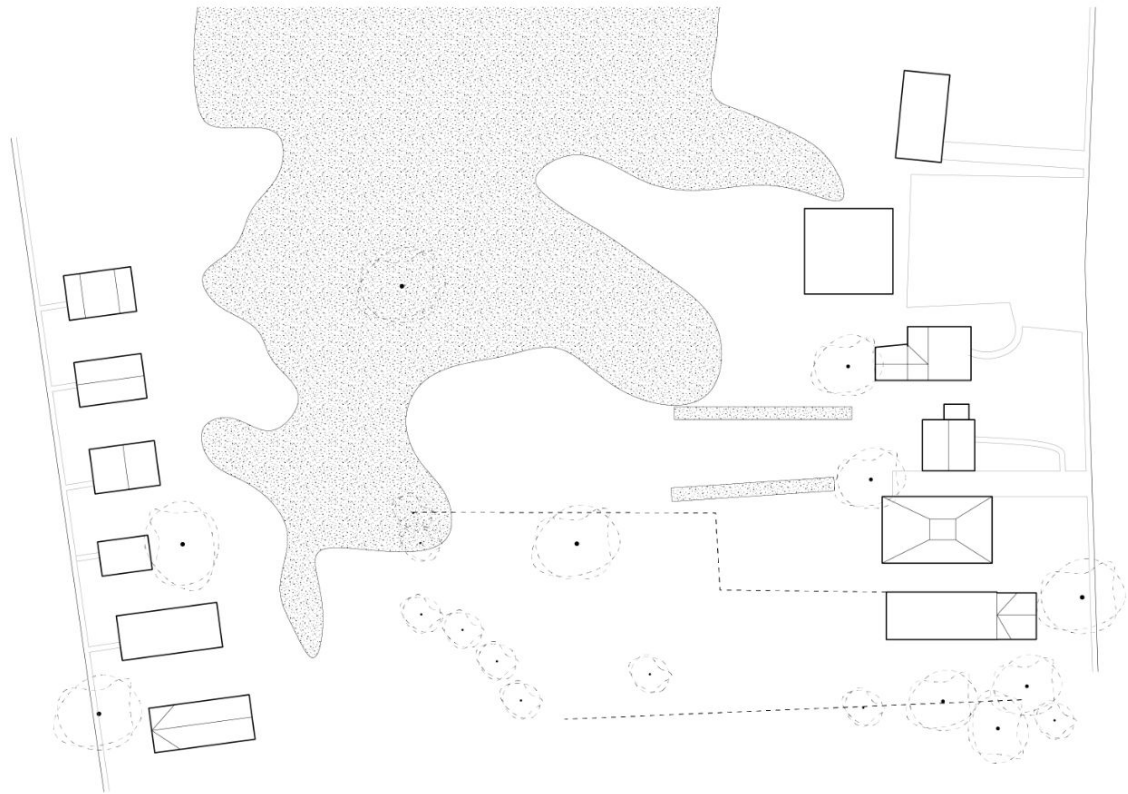
SOUTHERN EDGE OF 810 LOCUST ST. PROPERTY



Barberry Hedge (*Berberis thunbergii*)  
native to Japan and East Asia

Boxwood Hedge (*Buxus sempervirens*)  
native to parts of Europe, Asia, and Africa

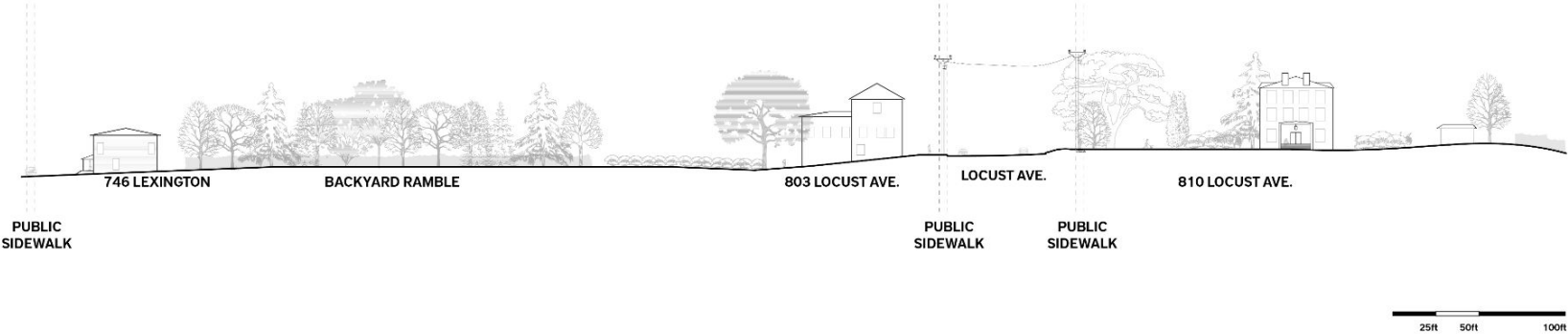
Site 1: 810 Locust Ave





# Site 1: 810 Locust Ave

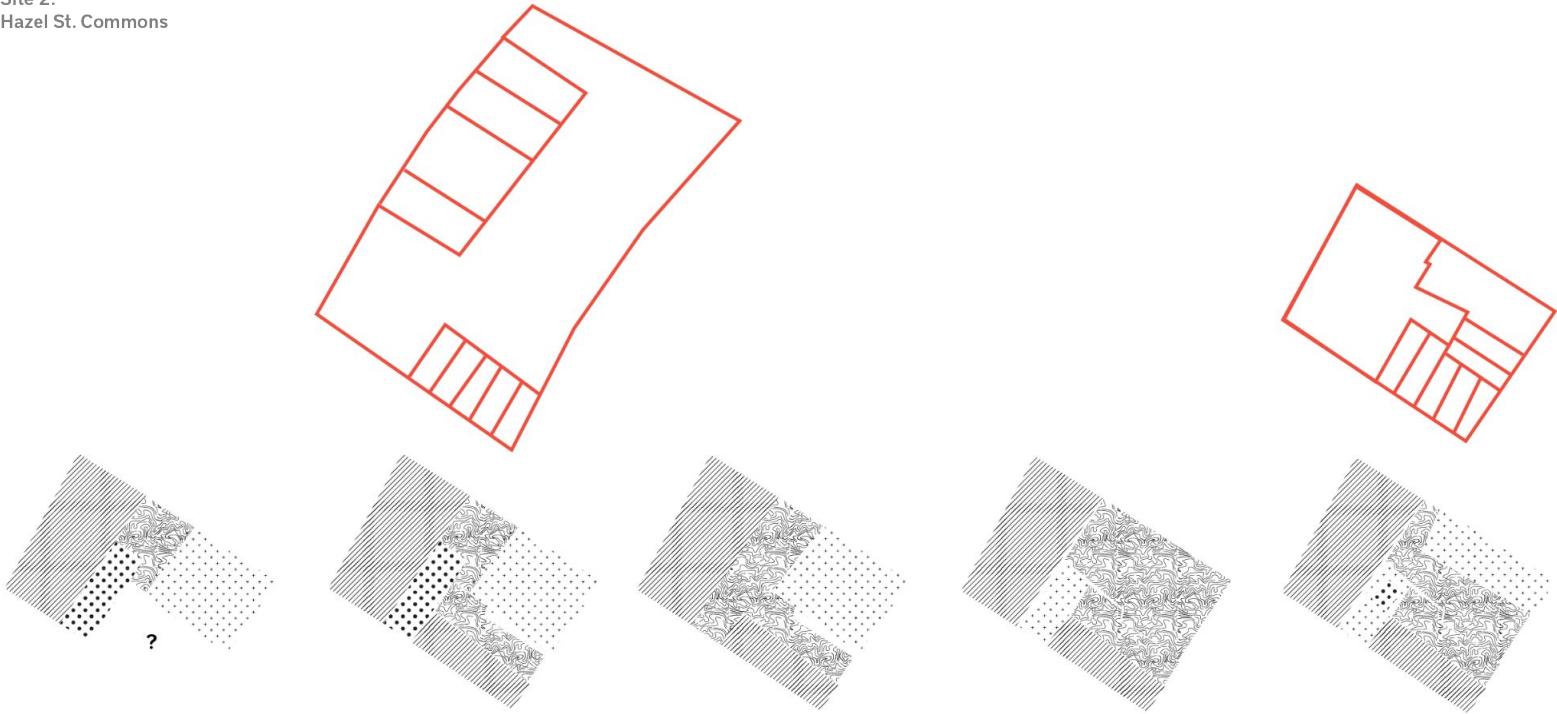
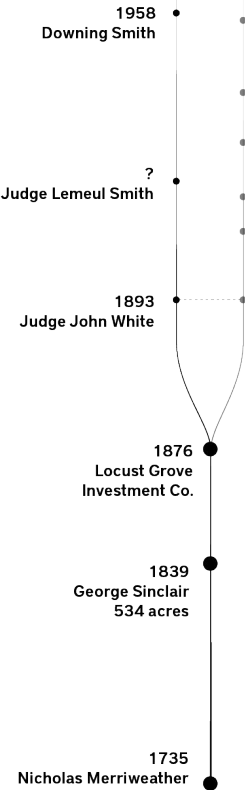
## EDGE TYPES



# Site 1: 810 Locust Ave

Site 1:  
810 Locust Grove

Site 2:  
Hazel St. Commons

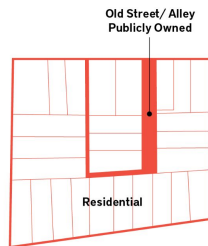


# **Site 2**

**Hazel St. "Commons"**

# BACKYARD COMMONS

PLANNED BUT NOT BUILT HILLCREST ST.



Unpainted Picket Fence  
easy to see over and through,  
but halts passage

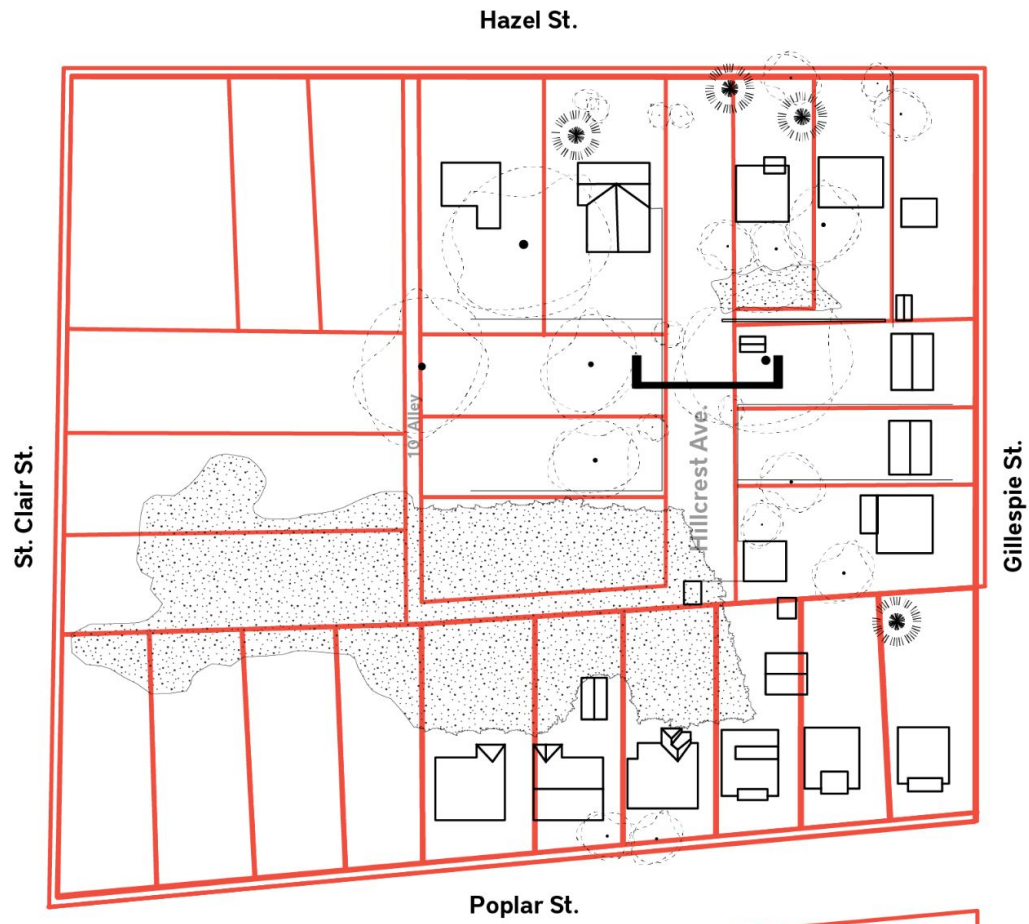
Bramble (Vines + English Ivy)  
easy to see over and through,  
but can walk over, but discouraged to do so



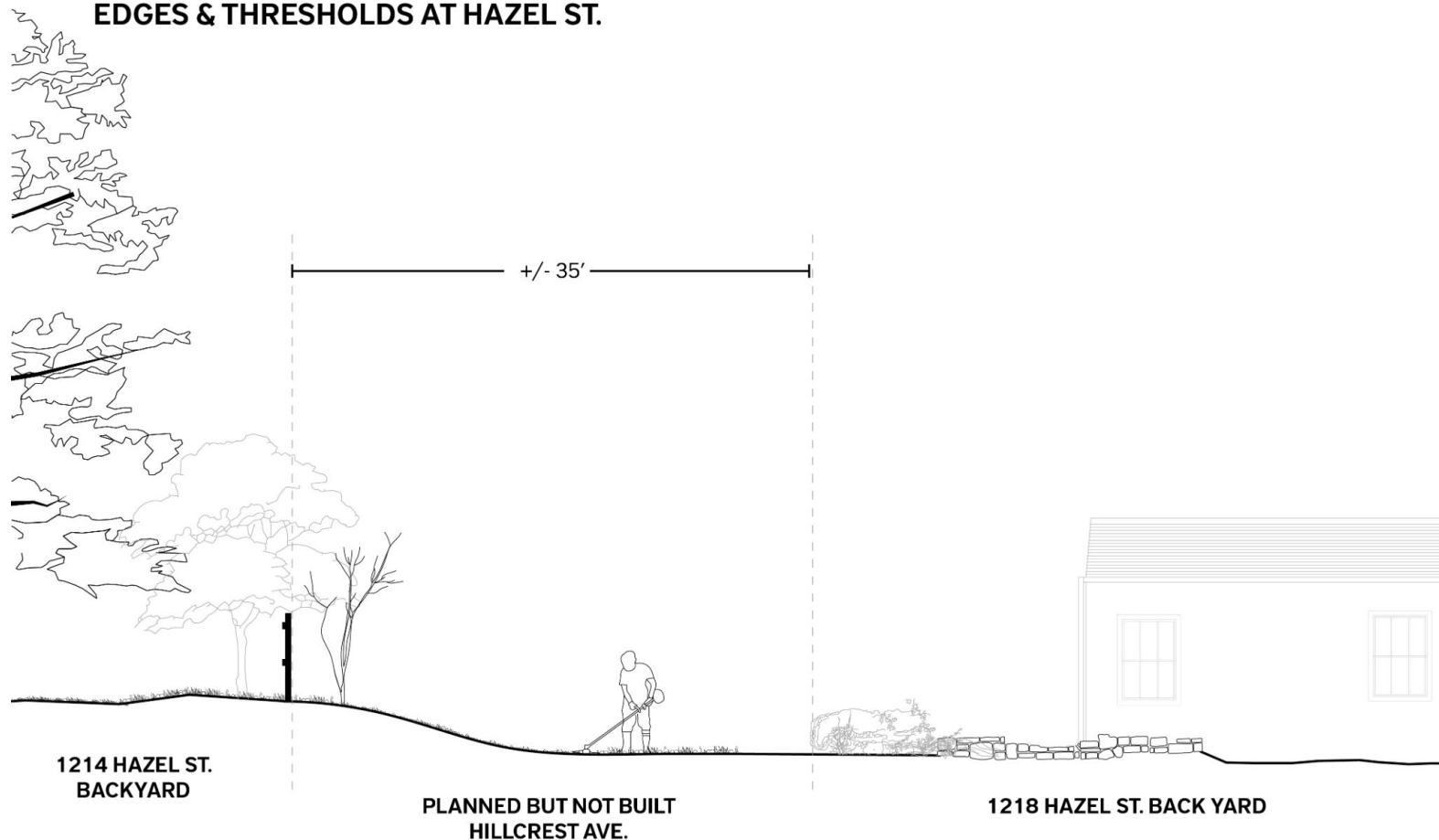
Ivy-Covered Storage Shed  
Cannot see over or through  
cannot pass through

Barberry Clump  
Cannot see over or through  
cannot pass through

Taller, Denser Picket Fence  
Cannot see over or through  
cannot pass through

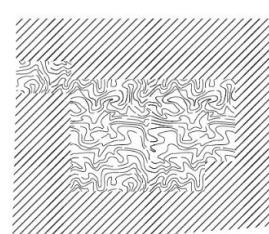
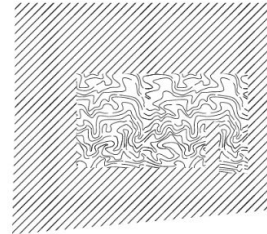
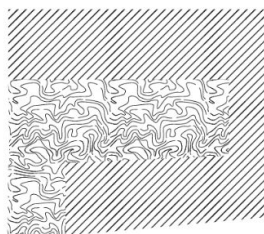
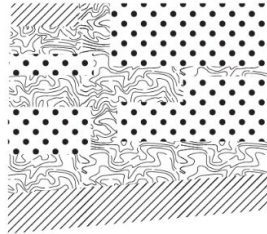
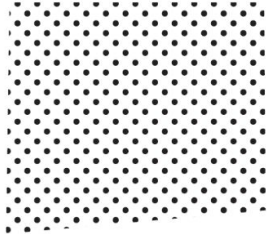
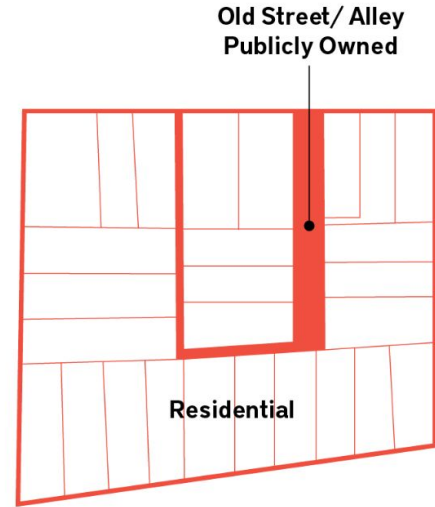
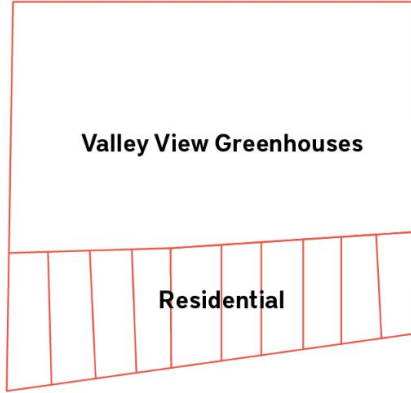
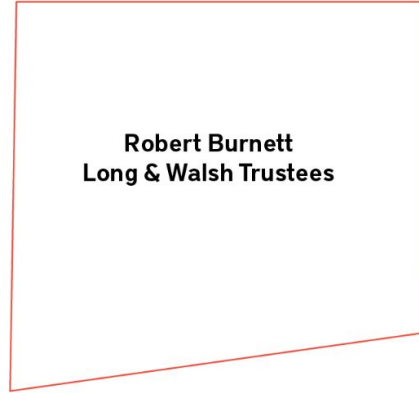


## EDGES & THRESHOLDS AT HAZEL ST.



# MANAGEMENT BOUNDARIES

Hazel St.



Interior Ecology



Agriculture



Backyard



Front yard



# 1903

Site 1:  
810 Locust Grove

Site 2:  
Hazel St. Commons

1955  
Residential Subdivision

1927  
Valley View Greenhouses

1924  
Robert Burnet  
Residential Subdivision

1920  
Walsh & Long Trustees

1919  
Robert Burnet

? John White (Judge)

1876  
Locust Grove  
Investment Co.

1839  
George Sinclair  
534 acres

1735  
Nicholas Merriweather

Interior Ecology



Front yard



Backyard



Agriculture

St. Clair St.

Hazel St.

Gillespie St.

Poplar St.



# 1937

Site 1:  
810 Locust Grove

Site 2:  
Hazel St. Commons

- 1955  
Residential Subdivision
- 1927  
Valley View Greenhouses
- 1924  
Robert Burnet  
Residential Subdivision
- 1920  
Walsh & Long Trustees
- 1919  
Robert Burnet
- ? John White (Judge)

1876  
Locust Grove  
Investment Co.

1839  
George Sinclair  
534 acres

1735  
Nicholas Merriweather

Interior Ecology

- Front yard
- Backyard
- Agriculture

St. Clair St.

Hazel St.

Gillespie St.

Poplar St.

# 1955

Site 1:  
810 Locust Grove

Site 2:  
Hazel St. Commons

1955  
Residential Subdivision

1927  
Valley View Greenhouses

1924  
Robert Burnet  
Residential Subdivision

1920  
Walsh & Long Trustees

1919  
Robert Burnet  
? John White (Judge)

1876  
Locust Grove  
Investment Co.

1839  
George Sinclair  
534 acres

1735  
Nicholas Merriweather

Interior Ecology



Front yard



Backyard



Agriculture

St. Clair St.

Hazel St.

10' Alley

Hillcrest Ave.

Gillespie St.

Poplar St.



# 1980

Site 1:  
810 Locust Grove

Site 2:  
Hazel St. Commons

1955  
Residential Subdivision

1927  
Valley View Greenhouses

1924  
Robert Burnet  
Residential Subdivision

1920  
Walsh & Long Trustees

1919  
Robert Burnet

? John White (Judge)

1876  
Locust Grove  
Investment Co.

1839  
George Sinclair  
534 acres

1735  
Nicholas Merriweather

Interior Ecology

 Front yard

 Backyard

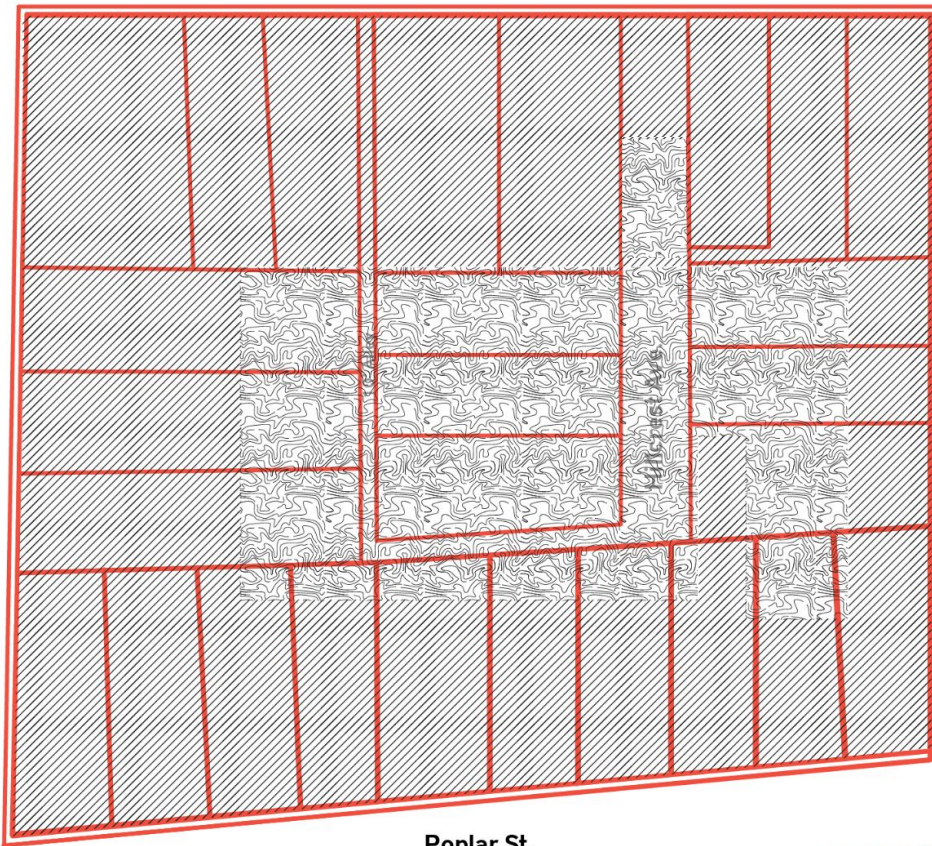
 Agriculture

St. Clair St.

Hazel St.

Gillespie St.

Poplar St.



# 2020

Site 1:  
810 Locust Grove

Site 2:  
Hazel St. Commons

- 1955  
Residential Subdivision
- 1927  
Valley View Greenhouses
- 1924  
Robert Burnet  
Residential Subdivision
- 1920  
Walsh & Long Trustees
- 1919  
Robert Burnet
- ? John White (Judge)

1876  
Locust Grove  
Investment Co.

1839  
George Sinclair  
534 acres

1735  
Nicholas Merriweather

Interior Ecology



Front yard

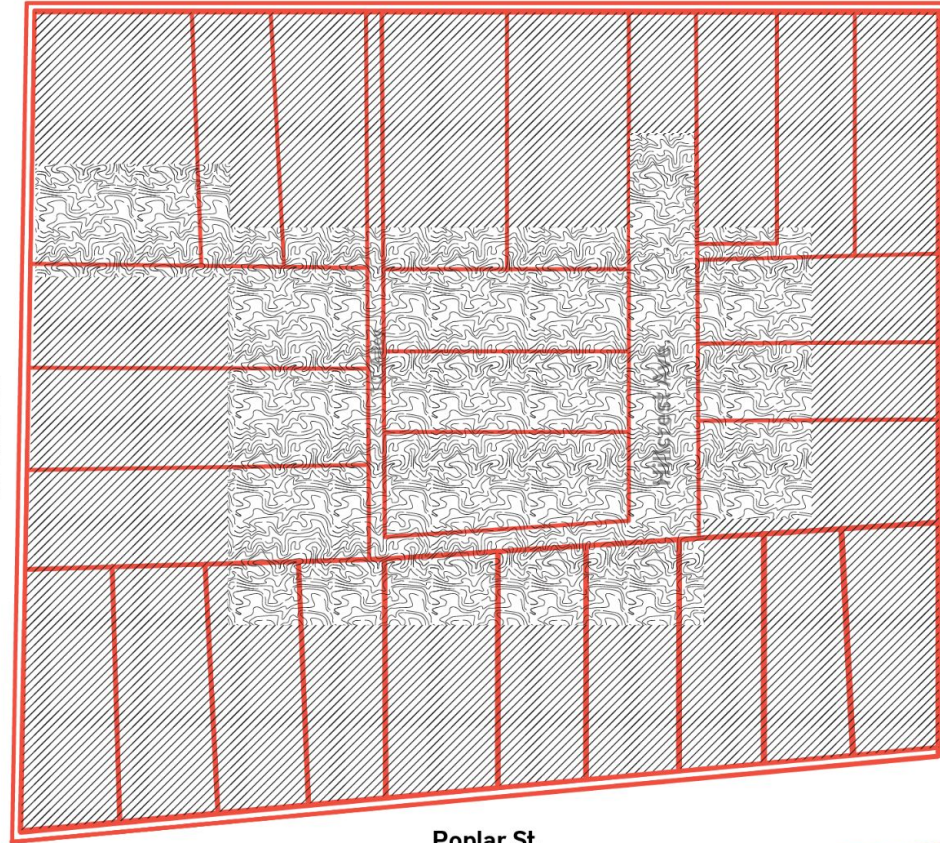


Backyard



Agriculture

St. Clair St.



Hazel St.

Gillespie St.

Poplar St.



**Global Botanical Trade**

**Valley View Greenhouses**

*Valley View*  
**GREENHOUSES INC.**

**CHARLOTTESVILLE, VIRGINIA**

# Valley View

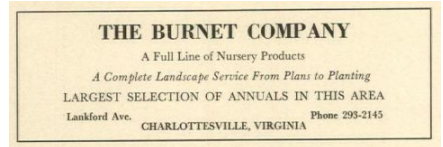
GREENHOUSES INC.

## CHARLOTTESVILLE, VIRGINIA

**1926**  
**Started by mother in**  
**Locust Grove back-**  
**yard**

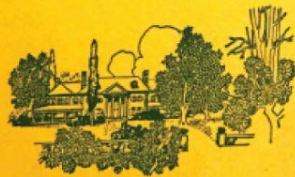
-

**Late 1950s**  
**Sold to establish The**  
**Burnet Company**



# *Valley View*

GREENHOUSES, INC.



Suggestions and Prices

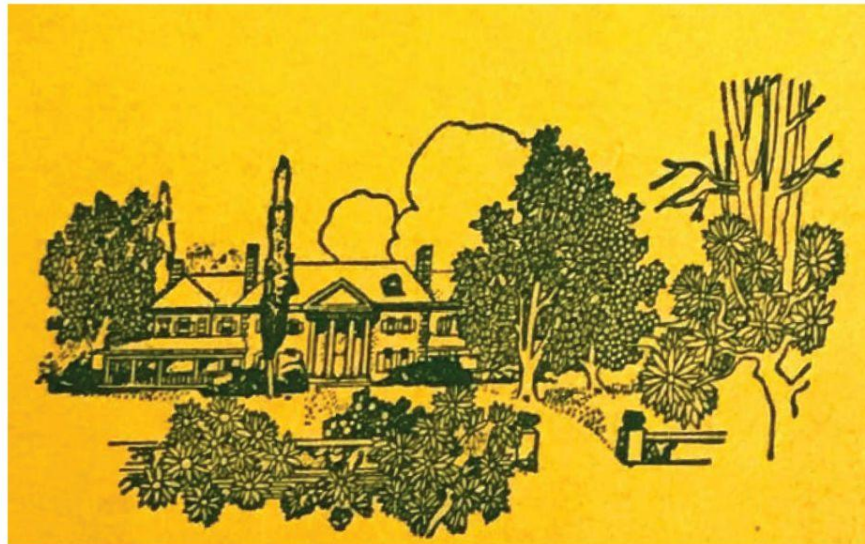
EVERGREENS :: SHRUBBERY

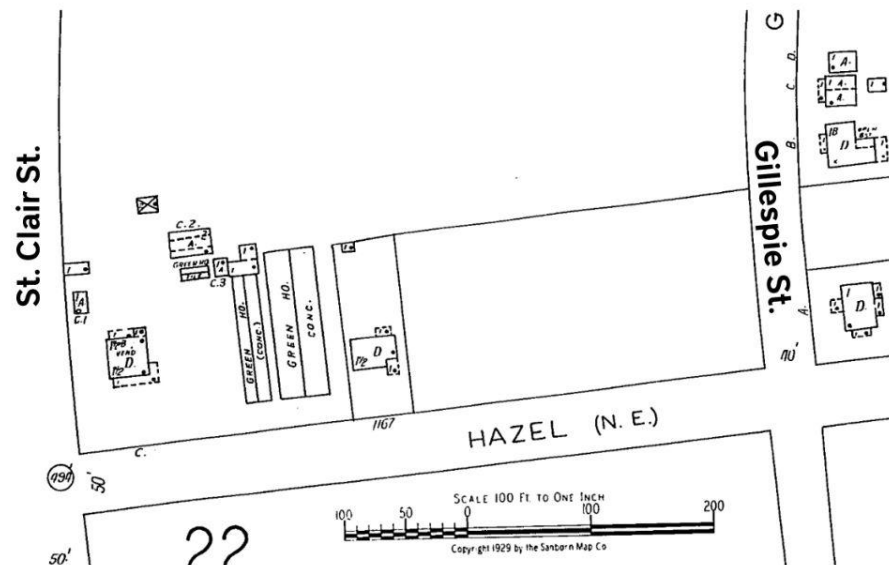
:: PERENNIALS ::

BULBS :: ROSES :: VINES

CHARLOTTESVILLE, VA.

## **Nursery Catalogs: A Glimpse Into Locust Grove's Garden Tastes, 1930s**





VISIT OUR GREENHOUSES OR NURSERY. We are situated within the City Limits of Charlottesville, on Hazel Street, and will be glad at all times to have you visit our establishment and inspect our stock. Our stock of Perennials is larger than any in this section; this and a wide variety of Nursery Stock awaits your inspection right here in Charlottesville.



# Evolving Tastes

## Valley View Nursery Catalog

You are cordially invited to visit  
CHARLOTTESVILLE AND ALBEMARLE COUNTY DURING  
GARDEN WEEK

UNIVERSITY  
OF  
VIRGINIA  
FOUNDED BY  
JEFFERSON  
1819

Twenty Miles  
From Famous  
Skyline Drive



MONTICELLO . . . HOME OF THOMAS JEFFERSON  
For further information, write or phone CHAMBER OF COMMERCE  
CHARLOTTESVILLE, VIRGINIA

ASH LAWN  
HOME OF  
JAMES MONROE

MICHIE TAVERN  
BOYHOOD HOME OF  
PATRICK HENRY

Digitized by Google Original from UNIVERSITY OF VIRGINIA

## ORNAMENTAL SHADE TREES

Shade trees are coming back into popularity again. Almost no home grounds are too small to have at least one or two shade or ornamental trees if properly placed. We are offering some of the more desirable varieties for this section of the country, trees of proven merit and resistant to the attacks of insects and diseases.

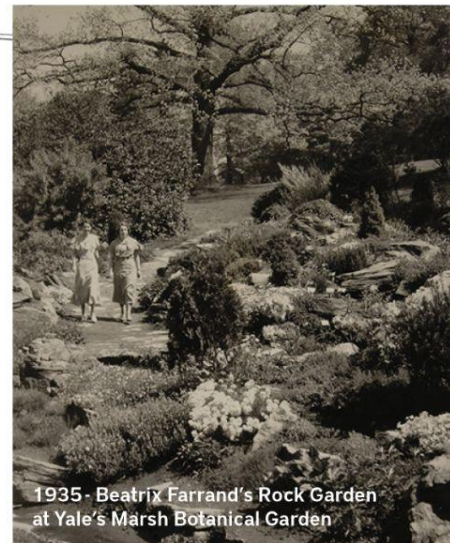
**Return of the Shade Tree**  
In post-agricultural suburbs

*Charlottesville, Virginia*

## \$5.00 ROCK GARDEN SPECIAL !

2	Alyssum Rostratum .....	\$ .30
2	Arabis Alpina .....	.30
2	Cerastium .....	.30
2	Dianthus Deltoides .....	.30
2	Dianthus Graniticus .....	.30
2	Dianthus Plumarius .....	.30
2	Gypsophila Paniculata .....	.30
2	Helianthemum Mutabile .....	.30
2	Dwarf Purple Iris .....	.30
2	Iberis Sempervirens .....	.30
1	Lavender .....	.15
2	Mertensia .....	.30
4	Phlox Divaricata Canadensis.....	.50
2	Phlox Subulata Rosea .....	.30
2	Phlox Subulata Rosea .....	.30
2	Saponaria Ocymoides .....	.30
6	Assorted Sedums .....	.75
2	Veronica Incana .....	.30
2	Veronica Repens .....	.30

Total Catalog Price .....\$6.20



1935 - Beatrix Farrand's Rock Garden  
at Yale's Marsh Botanical Garden

May we call your especial attention to our stock of Rock Garden plants? If you do not have a rockery or rock garden, start one; it will be a source of much joy and pleasure. Rock Garden plants are marked with an "R" at the left margin of the page.

**Rock Gardens**  
Low-maintenance garden for working  
class suburbia

## CLIMBING VINES

Under this heading we have listed some of the most valuable plants for beautifying the Home Grounds. Do you have an unsightly outbuilding or old fence to hide? The following plants will solve your difficulty. If you need some permanent shade or screen on your porch, make your selection from the following list.

### AMPELOPSIS

**BOSTON IVY**—A deciduous rapidly growing vine that clings firmly. After the leaves drop the clusters of blue berries are quite ornamental.

Strong plants.....\$ .35 each

### CLEMATIS

**CLEMATIS PANICULATA**—White star shaped flowers produced abundantly in late summer and fall. Very fragrant.

Strong plants.....\$ .40 each

### CELESTRUS SCANDENS: Bitter Sweet

**BITTER SWEET**—A popular vine producing orange berries in the fall. The berries are attractive to birds.

Vigorous plants.....\$ .60 each

### EUONYMUS RADICANS

**CLIMBING EUONYMUS**—An evergreen trailing or climbing Euonymus. Produces greenish-white berries, sometimes pink. Strong field grown plant—

10 to 12 inch.....\$ .45 each

### HARDY IVY

**HARDY ENGLISH IVY**—We have this plant in two distinct varieties, small leaf and large leaf. Probably the most popular evergreen vine.

3 inch pot plants, strong.....\$ .20 each

\$2.00 per dozen, \$15.00 per hundred

4 inch pot plants, strong.....\$ .30 each

\$3.00 per dozen, \$20.00 per hundred

### JASMINUM

**OFFICINALE, Star Jasmine**—Long slender grower requiring support. Waxy green leaves, with cluster of star-shaped white flowers. Very fragrant and a continuous bloomer.

18 to 24 inch strong plants.....\$ .45 each

### KUDZU VINE

**KUDZU VINE**—The large leaves make dense foliage, a very vigorous grower making 40 or 50 feet in a single season. Purple flowers in August.

35c each  
**WISTERIA, Purple**—Very large trusses of sky-blue flowers of tightly twining stems. A vigorous grower. Heavy plants, 3 years old.....\$ .50 each



Pyramidal Arborvitae

**PYRAMIDAL ARBORVITAE**—A columnar form, very desirable for entrance planting, requiring no shearing.

14

Valley View Greenhouses, Inc.

## HARDY EVERGREENS

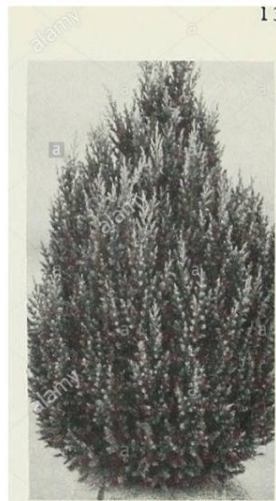
The time has come when no modern home is complete without an "out-door living room." Nothing can add quite so much character as the proper planting of your Home Grounds, nor so inexpensively enhance the value of your property.

The recent severe winters have shown anew the value of the Hardy Conifer Evergreens. When other less sturdy material has suffered severely from the rigors of King Winter, this group has come through with colors flying. Why not use more of them?

The public generally is realizing more than ever the truth of the phrase, "It is not a home until it is planted." The pleasure and pride you receive from a properly thought out plan of planting that is carefully executed, will many times over repay you for the small trouble and expense

**JUNIPER IRISH** — Of distinct beauty and form, being an erect column of bluish-green. Greatly used at entrances and as foundation plants. We believe our Irish Junipers are as fine as can be grown.

**DEODORA** — Indian Cedar. A stately tree with glaucous green foliage. Makes a beautiful specimen plant or is equally adapted to large plantings. Very effective when used along an avenue.



Spiny Greek Juniper

13



# Hedges

## Valley View Nursery Catalog

### HEDGE PLANTS

We list below Hedge Plants for various conditions and situations; plants that can be trimmed into formal compact hedges; others that can be left to grow into natural shape. All are very hardy and satisfactory. Instead of a fence that soon becomes unsightly, why not plant a "living fence"

**SUFFRUTICOSA, Dwarf Boxwood**—This very compact variety grows dense and slowly. For this reason is much used for edging walks, flower beds, etc.

#### ABELIA: BUSH ARBUTUS

**ABELIA GRANDIFLORA**—A very popular and beautiful broad-leaved evergreen. The graceful arching branches are covered with small dark glossy green leaves held throughout the entire winter. Small bell-shaped flowers of white with a slight blush, appear about the middle of May and continue until frost. Thus we have a broad-leaved evergreen making an ideal all-year hedge.

12 to 18 inch field grown plants—  
\$20.00 per hundred  
18 to 24 inch field grown plants—  
\$30.00 per hundred

#### BARBERRY

**JAPANESE BARBERRY**—This plant makes one of the most inexpensive formidable hedges that you can get.

9 to 12 inch.....\$15.00 per hundred  
12 to 18 inch.....\$19.50 per hundred

**ENGLISH PRIVET**—A very beautiful hedge plant. Makes a fine hedge.

18 to 24 inch.....\$15.00 per hundred  
2 to 3 feet .....\$20.00 per hundred  
3 to 4 feet .....\$25.00 per hundred

#### LIGUSTRUM AMURENSE: AMOR RIVER PRIVET

**AMOR RIVER PRIVET**—Excels any thing in the way of hedge, for this section of the country. The evergreen Privet Hedge.

12 to 18 inch—  
\$3.50 per hundred; \$30.00 per 1,000  
18 to 24 inch—  
\$5.00 per hundred; \$40.00 per 1,000  
2 to 3 feet .....\$ 7.00 per hundred  
3 to 4 feet .....\$10.00 per hundred

(When our customers wish us to, we will plant the above Privet Hedge in and around Charlottesville for \$2.50 per 100 plants, when spaced 6 inches apart, farther spacing is slightly more.

#### SPIREA

**VAN HOUTTEI SPIREA**—Makes a most effective hedge when in bloom.  
2 to 3 feet .....\$27.50 per hundred

# The “Green Carpet,” Hedges, + the Presentation of the Front Lawn

From a self-recorded narrative by Ms. Kate Flanagan Coles, formerly enslaved at a plantation just north of Locust Grove, owned by the Minor family.

“Mistress was fine at training children and the yard was very weedy after a good rain she had every child that was big enough to carry a basket and an old knife plucking up weeds, white and collard. After job was over, we had a party, molasses, lightbread and a dish of ginger cakes. If there was any ladies visiting her they were called to look at the green carpet as they called the yard.”



Images of 810 Smith Street from the Edward Lay Papers

## BOXWOOD- THE COLONIAL EDGE-MAKER

*Buxus sempervirens*



Pierre-Joseph Redoute

There are two commonly deployed cultivars of Boxwood: American, or Common, Box (*B. sempervirens*) and the smaller, English Box (*B. sempervirens* 'Suffruticosa'). The first topiary were crafted in the Roman Empire, but by the 13th century, 'Suffruticosa' was highly sought out in European high Renaissance gardens. In the 17th century, topiary, using both cultivars, was firmly in vogue, and though the highly maintenance intensive topiary gardens were only available to those with great wealth, the Boxwood had begun to circulate in communities and gardens of smaller

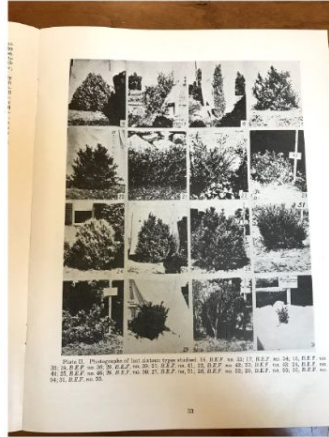
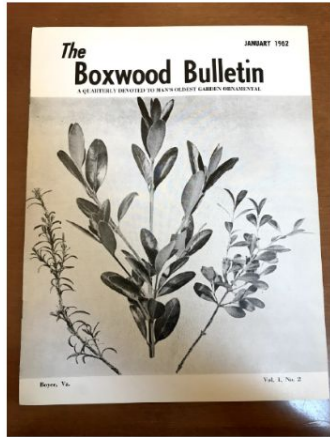
landholdings. During this period, the plant was also used popularly in European grave yards. Antebellum gardens used Boxwood heavily, invoking the European garden design which relied heavily on the crisp edges provided by parterres. At 810 Locust Grove and elsewhere in many of the neighborhood suburban gardens, Boxwood was planted at the modern-day property edges and forms a nearly impenetrable wall between the street and the interior of the private property.



Native Range: Southern Europe, Western Asia, Northern Africa

# BOXWOOD - THE COLONIAL EDGE-MAKER

*Buxus sempervirens*





## ENGLISH IVY - THE AGGRESSIVE ACADEMIC VINE

*Hedera helix*



Wayside and Woodland Blooms, F. Warne, London 1895

English Ivy (*H. helix*) is a very old plant that has long been depicted in art. The Roman god Bacchus, for example, is often depicted wearing a crown of Ivy and Grapevines. English Ivy was first documented in the Americas around 1800, brought over by colonial settlers. In the 17th and 18th centuries, English Ivy was clipped and pruned in a highly formal manner, while the English “naturalist” tradition, it was let loose on ruins as a way of exaggerating age and giving a sense of time in the garden.

During the Victorian era, Ivy was used as a “fedge,” where ivy is grown up a fence. Ivy plays an important ecological role for many invertebrates and insects. Today, there is much debate about whether or not the ivy hurts the trees. Though in some cases, the ivy can actually help to maintain integrity of masonry structures. It is listed as a Virginia invasive plant of “medium” concern.



Native Range: Eurasia and North Africa



## BRIARS - FOOD + STICKERS AT THE EDGES

*Rubus* spp.



Hamburg, Germany 1960



Native Range: Europe, Asia Minor, North America

Briars, or clumps of thorny raspberry and blackberry bushes are found growing abundantly at the interstitial wild edges at the Hazel St. site. This plant and its group at the wild edge of property is significant both for its fruit production and its thorny tangle. A handful of Works Progress Association narratives, collected between 1936 and 1938, offer windows into the medicinal uses and refuge offered by the briar patch for enslaved people seeking refuge or forms of care outside of the master's control. Harriet Collins, born in Houston, Texas described "queer things white folks can't understand" of the role of briars in enslaved care and medicinal practices. She says "My mammy larned me a lots of doctorin', what she larnt from old folkses from Africy, and some de Indians larnt her. If you has rheumatism, jes' take white sassafras root and bile it

### Valley View Nursery Catalog

#### RASPBERRIES

Good Strong Plants, 80c per dozen

**BLACK**—Cumberland, much superior to the wild type.

and drink de tea... Put red pepper in you shoes and keep de chills off, or string briars round de neck."

Laura Cornish, also enslaved in Texas described the briar as a place where enslaved people hid from their enslavers. Her narrative reads "One time us chillen playin' out in de woods and seed two old men what look like wild men, sho' 'nough. Dey has long hair all over de face and dere shirts all bloody. Us run and tell Papa Day and he makes us take him dere and he goes in de briar patch where dem men hidin'..."

Briars grow natively in the Piedmont and were noted in Thomas Jefferson's Garden Book as a source of native pride of the vast productive potential of the new American landscape.

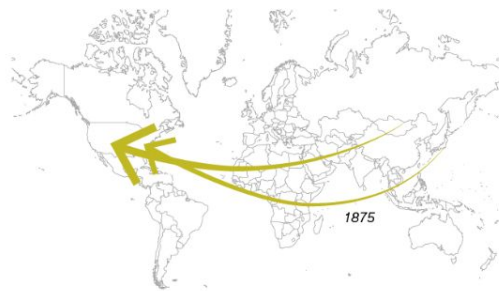
## BARBERRY - A THORNY BARRIER WITH LOTS OF CONTROVERSY

*Berberis thunbergii* + *Berberis vulgaris*



Berberis is a genus of over 450 species, native to Europe, northwest Africa, and the Middle East. Its fruit is highly desirable by birds, which means the plant is highly transferable. Being dense and thorny, *B. vulgaris* (whose berries are a major element of Persian cuisine) was popular as a hedging plant and was used as such by early settlers in North America and New Zealand. It is also an alternative host for *Puccinia graminis*, the devastating black stem rust of grain crops. Starting in 1918, the Common Barberry (*B. vulgaris*) was banned in many US wheat-growing states, including mass media campaigns against the plant that deploy nativist and patriotic rhetoric.

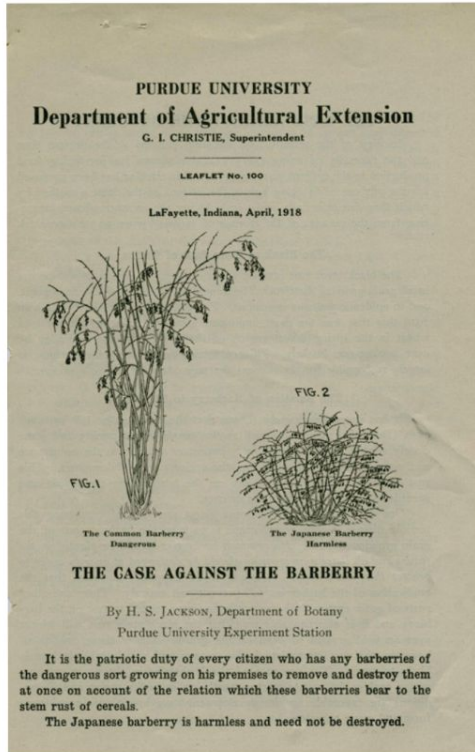
Botanical exploration in the 19<sup>th</sup> and 20<sup>th</sup> century introduced a vast number of new species, some of which have abundantly filled the hedging role for suburban gardens. The most valuable intro to the nursery trade has been the deciduous *B. thunbergii*, Japanese Barberry, identified in Japan by Carl Peter Thunberg in 1784. It was not introduced in the nursery trade for another century, but large 12-foot specimens of this Japanese barberry form hedges at the Southern and Western edge of the 810 Locust Ave. property. Japanese Barberry, because of its tendency to leaf out before other shrubs and perennials and shade our competition, is listed a Virginia invasive plant as a “medium” threat.



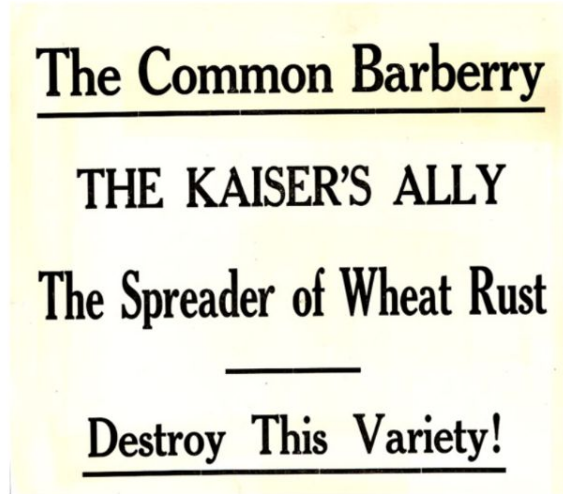
*B. thunbergii* Native Range: Japan  
*B. vulgaris* Native Range: Middle and Western Asia

# "BARBERRY OR BREAD" PUBLIC CAMPAIGN AGAINST COMMON BARBERRY

*B. vulgaris*



Purdue University Extension leaflet making the case against the common barberry in 1918.



(center, right)  
Propaganda posters used during World War I to tarnish the formerly widely favorable public image of the common barberry in the US.

# Interior / Interstitial Spaces



Lands Controlled by  
Charlottesville Land Co.  
1890 (see full map in Drive)

Gray area controlled by “option  
lease”?

Sinclair House

Riverdale  
Estate?

Lands Controlled by  
Charlottesville Land Co.  
1890 (see full map in Drive)

Gray area controlled by “option  
lease”?

Sinclair House

Riverdale  
Estate?

Lands Controlled by  
Charlottesville Land Co.  
1890 (see full map in Drive)

Gray area controlled by “option  
lease”?

Sinclair House

Riverdale  
Estate?

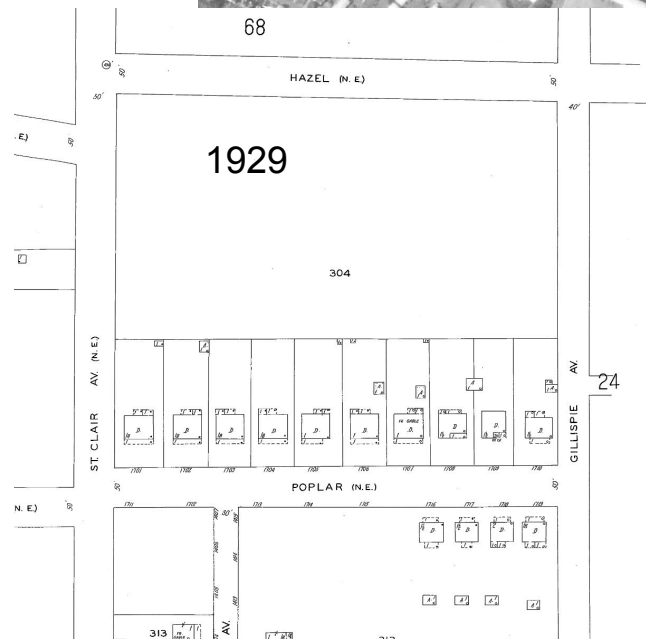
Lands Controlled by  
Charlottesville Land Co.  
1890 (see full map in Drive)

Gray area controlled by “option  
lease”?

Sinclair House

Riverdale  
Estate?

1937





1957



1966

Claiborne Johnston





1974



1980





1990



1996





# Property Ecology Questions

How have property boundaries shaped maintenance regimes and vegetation in Locust Grove?

How are boundaries typically maintained and where have they been blurred in Locust Grove? How have these conditions created an ecology of the commons?

Can maintenance regimes shape how we understand and interact with these boundaries?

**From Leah:** What species, and therein, what stories, grow in interstitial or edge conditions between parcels, along stream beds, or in less managed lots? And to what degree do these plant logics reify or contest plantation logics?

Gardens vs. wilds vs. cultivation

# Edges

Vegetated edge - historic aerials + fieldwork

Maintenance edges - historic aerials + fieldwork

Property edges - overlay map of property boundaries change over time

- old agricultural bulletins about plants (special collections)

- narrow: particular plants, spatial arrangements?

- setbacks/dimensions - frontyard/backyard

- social implications of maintenance

- age of vegetation (north of 250 developed later)

# Methods

Vegetation change through analysis of aerial photography

Mapping property boundaries? May be too difficult

Intentionally maintained boundaries/enclosures vs. blurring / maintained

- Edges of enclosure or interstitial - presentation vs. hidden
- Edge, vs. boundary - how do they function and how does vegetation structure it? Markers of space, structuring space

1313 Poplar St.

Purchased by Barbara Via, 1945







## Aerial Imagery



### Operational Layers

- ☐ Aerials\_1996 ...
- ☐ Aerials\_1990 ...
- ☐ Aerials\_1980 ...
- ☐ Aerials\_1974 ...
- ☐ Aerials\_1966 ...
- ☐ Aerials\_1957 ...
- ☒ Aerials\_1937 ...



## Aerial Imagery



### Operational Layers

- ☐ Aerials\_1996 ...
- ☐ Aerials\_1990 ...
- ☐ Aerials\_1980 ...
- ☐ Aerials\_1974 ...
- ☐ Aerials\_1966 ...
- ☒ Aerials\_1957 ...
- ☒ Aerials\_1937 ...



## Aerial Imagery



### Operational Layers

- ☐ Aerials\_1996 ...
- ☐ Aerials\_1990 ...
- ☐ Aerials\_1980 ...
- ☐ Aerials\_1974 ...
- ☒ Aerials\_1966 ...
- ☒ Aerials\_1957 ...
- ☒ Aerials\_1937 ...





## Aerial Imagery



### Operational Layers

- ☐ Aerials\_1996 ...
- ☐ Aerials\_1990 ...
- ☐ Aerials\_1980 ...
- ☒ Aerials\_1974 ...
- ☒ Aerials\_1966 ...
- ☒ Aerials\_1957 ...
- ☒ Aerials\_1937 ...





## Aerial Imagery



### Operational Layers

- ☐ Aerials\_1996 ...
- ☐ Aerials\_1990 ...
- ☒ Aerials\_1980 ...
- ☒ Aerials\_1974 ...
- ☒ Aerials\_1966 ...
- ☒ Aerials\_1957 ...
- ☒ Aerials\_1937 ...



Aerial Imagery



#### Operational Layers

- ☐ Aerials\_1996 ...
- ☒ Aerials\_1990 ...
- ☒ Aerials\_1980 ...
- ☒ Aerials\_1974 ...
- ☒ Aerials\_1966 ...
- ☒ Aerials\_1957 ...
- ☒ Aerials\_1937 ...

Article on tree canopy change research:

<https://link-springer-com.proxy01.its.virginia.edu/content/pdf/10.1007/s00267-017-0934-0.pdf>

# Valley View Greenhouses

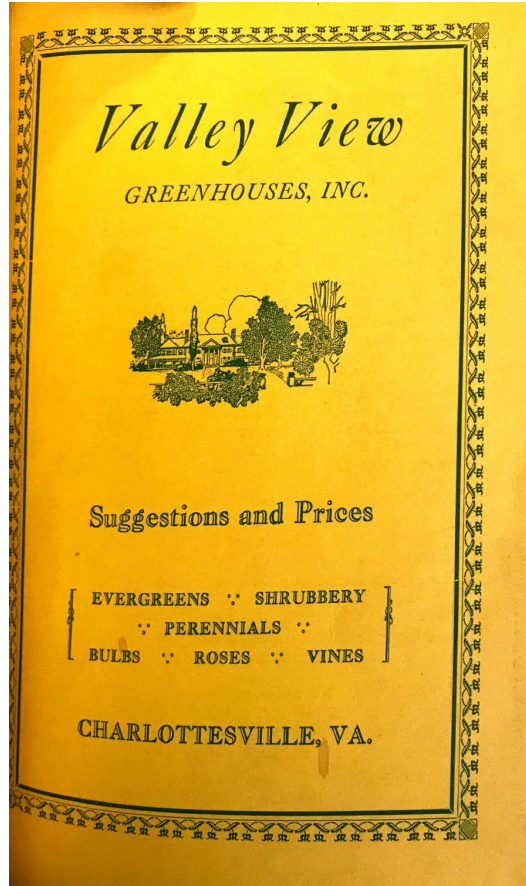
“Jim attended Miller School and was graduated from the Charlottesville School For Boys, entering Davidson College at the age of 16. He was graduated from the University of Maryland with a degree in horticulture and joined the family business, Valley View Florists and Greenhouses, in Charlottesville. This business was started by Jim's mother in 1926 in her backyard greenhouses on Hazel Street (near today's Valley View Circle) having a panoramic view of the Rivanna River Valley when one looked to the northeast. Jim's father joined his wife in the business in the 1930's and subsequently acquired the growing operations formerly operated by the Lankford family on South First Street. Following the sale of the retail florist business in the late 1950's, Jim became president of the wholesale florist and landscape operations renamed as The Burnet Company. Jim was elected to terms as vice president and as president of the Mid-Atlantic Florists Association.”

James Burnet Obituary

<https://www.legacy.com/obituaries/legacy/obituary.aspx?n=james-hazen-burnet&pid=123547662>

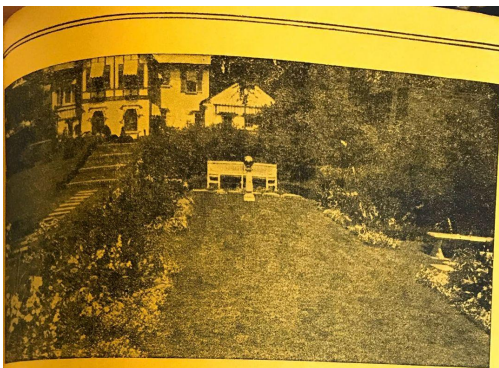


## Valley View Greenhouses



**Valley View**  
**GREENHOUSES INC.**  
**CHARLOTTESVILLE, VIRGINIA**

**VISIT OUR GREENHOUSES AND NURSERIES.** We are situated within the city limits of Charlottesville on Hazel St., and will be glad at all times to have you visit our establishment and inspect our stock. Our stock of perennials is larger than any in this section; this and a wide variety of Nursery stock await your inspection right here in Charlottesville.



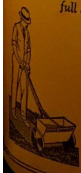
## For Beautiful Lawns and Gardens

All plants require a complete, balanced diet for full growth and beauty. The best seed or plants will not produce good results if grown in a soil which is deficient in any one of the many necessary food elements.

For velvety-green lawns with deep, extensive roots; large, beautiful flowers; luxuriantly foliaged shrubs and trees; and early, delicious vegetables, feed them Vigoro, the complete, scientifically balanced food for all plants, and you may be sure your plants have all the nourishment they need.

Vigoro is easy to use and economical. Simple directions for feeding everything you grow accompany each bag or package. Vigoro is used annually on 5,000,000 homes. We recommend it.

The Vigoro Spreader applies Vigoro, grass seed, and other materials evenly and accurately. Write for prices and full description.



# VIGORO

Complete plant food

A Product of Swift & Company

A square meal for lawns and flowers is 4 lbs. of Vigoro per 100 sq. ft.

	Price:
100-lb. Bag.....	\$3.00
50-lb. Bag.....	\$1.75
25-lb. Bag.....	.80
5-lb. Pkg.....	.10
12-oz. Pkg.....	.10



## 1932 Catalogue Sections:

Ornamental Shade Trees  
Annuals and Bedding Plants  
Fertilizers and Insecticides  
\$5 Rock Garden Special  
Aquatics and Bog Plants  
Hardy Evergreens  
Goldfish and Supplies  
Deciduous Flowering Shrubs  
Garden Supplies  
Small Fruits  
Broad-leaved Evergreens  
Climbing Vines  
Hardy Bulbs  
Roses  
Hedge Plants

## CLIMBING VINES

### AMPELOPSIS

**BOSTON IVY**—A deciduous rapidly growing vine that clings firmly. After the leaves drop the clusters of blue berries are quite ornamental. \$ .35 each  
Strong plants.....

### CLEMATIS

**CLEMATIS PANICULATA**—White star shaped flowers produced abundantly in late summer and fall. Very fragrant. \$ .40 each  
Strong plants.....

**CELESTRUS SCANDENS: Bitter Sweet**  
**BITTER SWEET**—A popular vine producing orange berries in the fall. The berries are attractive to birds. Vigorous plants..... \$ .60 each

### EUONYMUS RADICANS

**CLIMBING EUONYMUS**—An evergreen trailing or climbing Euonymus. Produces greenish-white berries, sometimes pink. Strong field grown plant—10 to 12 inch..... \$ .45 each

### HARDY IVY

**HARDY ENGLISH IVY**—We have this plant in two distinct varieties, small leaf and large leaf. Probably the most popular evergreen vine. \$ .20 each  
3 inch pot plants, strong..... \$ .30 each  
4 inch pot plants, strong..... \$ .30 per dozen, \$20.00 per hundred

### JASMINUM

**OFFICINALE, Star Jasmine**—Long slender grower requiring support. Waxy green leaves, with cluster of star-shaped white flowers. Very fragrant and a continuous bloomer. \$ .45 each  
18 to 24 inch strong plants.....

### KUDZU VINE

**KUDZU VINE**—The large leaves make dense foliage, a very vigorous grower making 40 or 50 feet in a single season. Purple flowers in August. 35c each  
8 to 10 inch..... \$ .50 each

**WISTERIA, Purple**—Very large trusses of sky-blue flowers of tightly twining stems. A vigorous grower. Heavy plants, 3 years old..... \$ .50 each

We call your attention to our list of grapes; these are fine vines beginning to bear already. Our strawberries are very good.

### GRAPES

Strong healthy vines, 25c each, \$2.50 per dozen.  
**KAHAWA**—A good red variety.  
**KAHAWA**—Early red.  
**KAHAWA**—Late red.  
**KAHAWA**—Best purple midseason.  
**KAHAWA**—Small pink, early.  
**KAHAWA**—Greenish white with yellow tinge.  
**KAHAWA**—One of the best white.  
**KAHAWA**—Midseason purple, very good.

### ASPARAGUS ROOTS

Strong two year old roots—  
20c per dozen, \$1.25 per hundred

## SMALL FRUITS

### RASPBERRIES

Good strong plants, \$1.00 per dozen  
**BLACK**—Cumberland, much superior to the wild type.  
**RED**—Everbearing. A few plants in odd places are a source of pleasure and profit.

### STRAWBERRIES

We list below four varieties of good standard sorts that have been thoroughly tried out. Good strong young plants 25c per dozen, \$1.00 per hundred. By mail postage 10c extra per hundred.  
**AROMA**—Large beautiful berry, late and productive.  
**AROMA**—Fine midseason.  
**GANDY**—Large fine berries, one of the best late.  
**PREMIER**—Very early.

## BROAD-LEAVED EVERGREENS

This group of trees and shrubs is fast growing in popularity, largely due to the fact that most of the plants in this classification thrive well in at least partial shade; many of them well in total shade. No modern planting is complete without at least some of the desirable subjects listed below. Broad-leaved Evergreens have the double value of being pretty all the year around besides producing beautiful blooms during the spring and summer months.

### COTONEASTER

**ABELIA**—Bush Abutilon  
**ABELIA GRANDIFLORA**—A very popular and beautiful broad leaved evergreen. The graceful arching branches are covered with small dark glossy green leaves held throughout the entire winter. Small bell-shaped flowers of white, with a slight bluish upper about the middle of May and continue until frost. Thus you have a blooming evergreen shrub of rare beauty and usefulness.  
12 to 18 inch..... \$ .50 each, \$5.00 per doz.  
18 to 24 inch..... \$ .65 each, \$6.50 per doz.  
2 to 3 feet..... \$ .90 each, \$9.00 per doz.  
3 to 4 feet..... \$1.10 each

### AZALEAS

One of the very best of the broad-leaved evergreens. Requires an acid soil, avoid the use of lime or bone meal. Use a mulch of oak leaves or peat moss and cultivate only by hand weeding as the roots are just beneath the surface.  
**HINDOOGIRI**—Bright carnation, one of the most popular and one of the hardest of the evergreen varieties.  
6 to 8 inch..... \$1.00 each  
8 to 10 inch..... \$1.25 each  
10 to 12 inch..... \$1.50 each  
**HINDOOGIRI**—While not quite as hardy as Hindoogir, is a very satisfactory semi-evergreen. A clear soft pink.  
6 to 8 inch..... \$1.00 each  
8 to 10 inch..... \$1.25 each  
10 to 12 inch..... \$1.50 each  
**PINK PEARL**—Salmon Rose shaded lighter. Flower in house type.  
6 to 8 inch..... \$1.00 each  
8 to 10 inch..... \$1.25 each  
10 to 12 inch..... \$1.50 each

### BOXWOOD

**ARBORESCENS, Tree Box**—A rapid growing variety of the broad-leaved evergreen. Will stand hard frosts readily. White blooms in the early spring and late.  
12 to 18 inch..... \$1.00 each  
18 to 24 inch..... \$1.25 each  
2 to 3 feet..... \$1.50 each  
3 to 4 feet..... \$1.75 each  
**LUCIDUM, Wax-leafed**—One of the most valuable of the broad-leaved evergreens. Will stand hard frosts readily. White blooms in the early spring and late.  
12 to 18 inch..... \$1.00 each  
18 to 24 inch..... \$1.25 each  
2 to 3 feet..... \$1.50 each  
3 to 4 feet..... \$1.75 each

### LONICERA

**NITIDA**—A low compact growing evergreen. Small box-like leaves. Quite hardy, makes a good foundation subject.  
6 to 12 inch..... \$1.00 each  
**DAPIPHE CNEORUM**  
**DAPIPHE CNEORUM**, Garland Flower—Dwarf spreading shrub growing to 17 inch..... \$1.00 each



## HEDGE PLANTS

We list below hedge plants for various conditions and situations, plants that can be trimmed into formal compact hedges, others that can be left to grow into natural shape. All are very hardy and satisfactory. Instead of a fence that soon becomes unsightly why not plant a "living fence"?

<b>BARBERRY</b>	
JAPANESE BARBERRY—This plant makes one of the most inexpensive formidable hedges that you can get.	
12 to 18 inch.....	\$20.00 per hundred
<b>LIGUSTRUM AMURENSE: Amoor River Privet</b>	
AMOO RIVER PRIVET—Excels anything in the way of hedge, for this section of the country. The evergreen privet hedge.	
12 to 18 inch.....	\$5.00 per 100; \$45.00 per 1,000

18 to 24 inch.....	\$6.50 per 100; \$60.00 per 1,000
2 to 3 feet.....	\$8.50 per 100; \$80.00 per 1,000
3 to 4 feet.....	\$11.00 per 100
(When our customers wish us to we will plant the above privet hedge in and around Charlottesville for \$2.50 per hundred plants.)	

<b>SPIREA</b>	
VAN HOUTTEI SPIREA—Makes a most effective hedge when in bloom.	
2 to 3 feet.....	\$27.50 per hundred
3 to 4 feet.....	\$37.50 per hundred

1932

## HARDY EVERGREENS

The time has come when no modern home is complete without an "out-door living room." Nothing can add quite so much character as the proper planting of your Home Grounds, nor so inexpensively enhance the value of your property.

The recent severe winters have shown anew the value of the Hardy Conifer Evergreens. When other less sturdy material has suffered severely from the rigors of King Winter, this group has come through with colors flying. Why not use more of them?

The public generally is realizing more than ever the truth of the phrase, "It is not a home until it is planted." The pleasure and pride you receive from a properly thought out plan of planting that is carefully executed, will many times over repay you for the small trouble and expense involved.

Nothing can quite take the place of Hardy Evergreens around the home, and too, nothing can quite so inexpensively beautify your property as a well balanced planting of shrubs and evergreens.

May we not help you plan your grounds; you will find our service very helpful, we feel sure.

Do not wait until some later date to do your planting, the present demand for good nursery stock is increasing and indications are that better material will soon be scarce.

You cannot go wrong buying our evergreens at these prices; these are not the so-called "bargains" some advertise; most of those bargains are dear at any price, but our stock is freshly dug the day you receive it, not a week or two before.

Another thing worth remembering: Our stock is all sold and delivered bearing a certificate of inspection.

# Rock Gardens

Linda Antonacio-Hoade of the [Penn State College of Agricultural Sciences](#) extension services says rock gardens were “low maintenance and upkeep.” She believes that this was the reason rock gardens were so popular in the early 20th century. “When you think about the lack of modern conveniences,” she says, “folks had many other things that needed to be done in order to live ... and garden maintenance was not high on the list.”